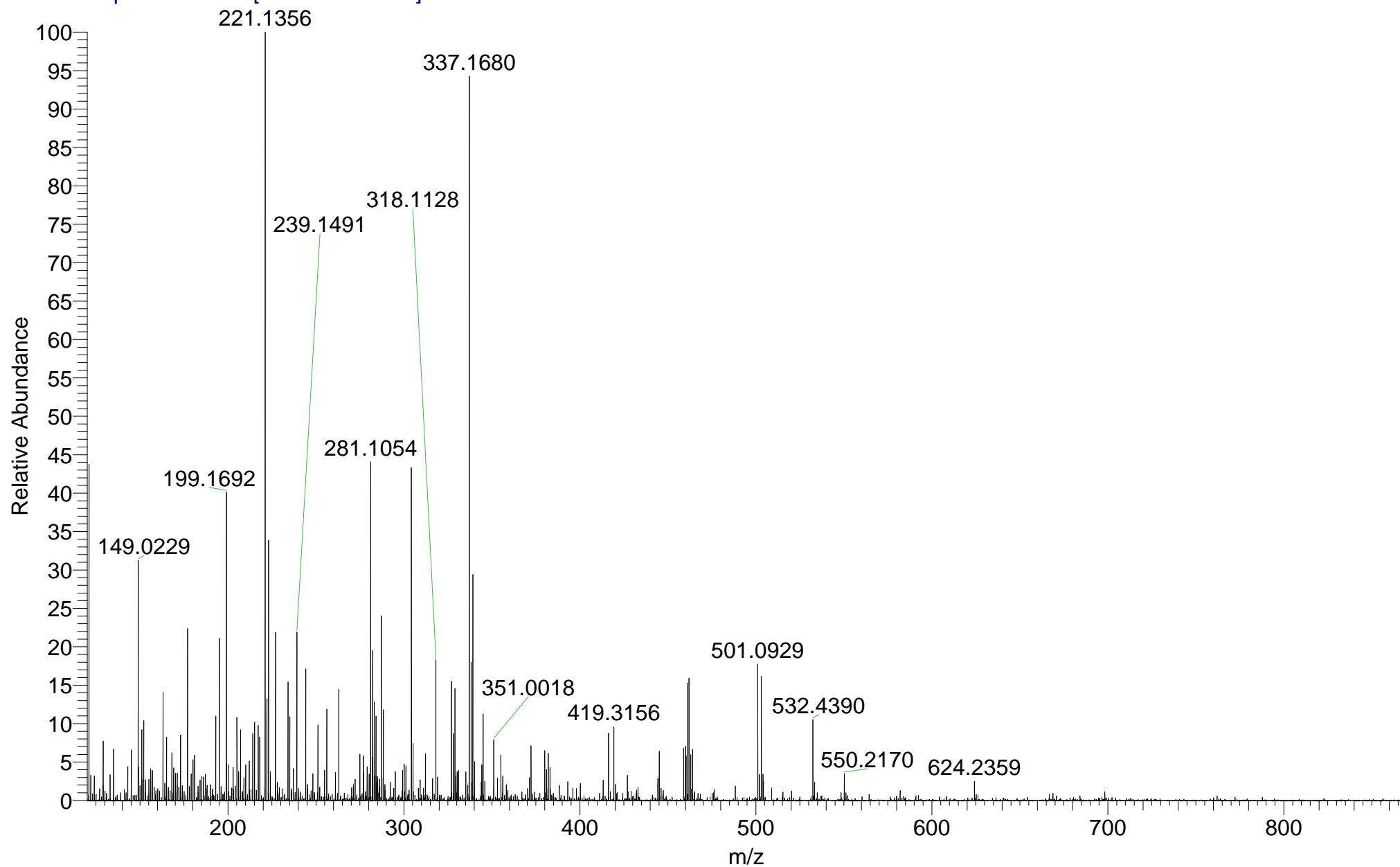
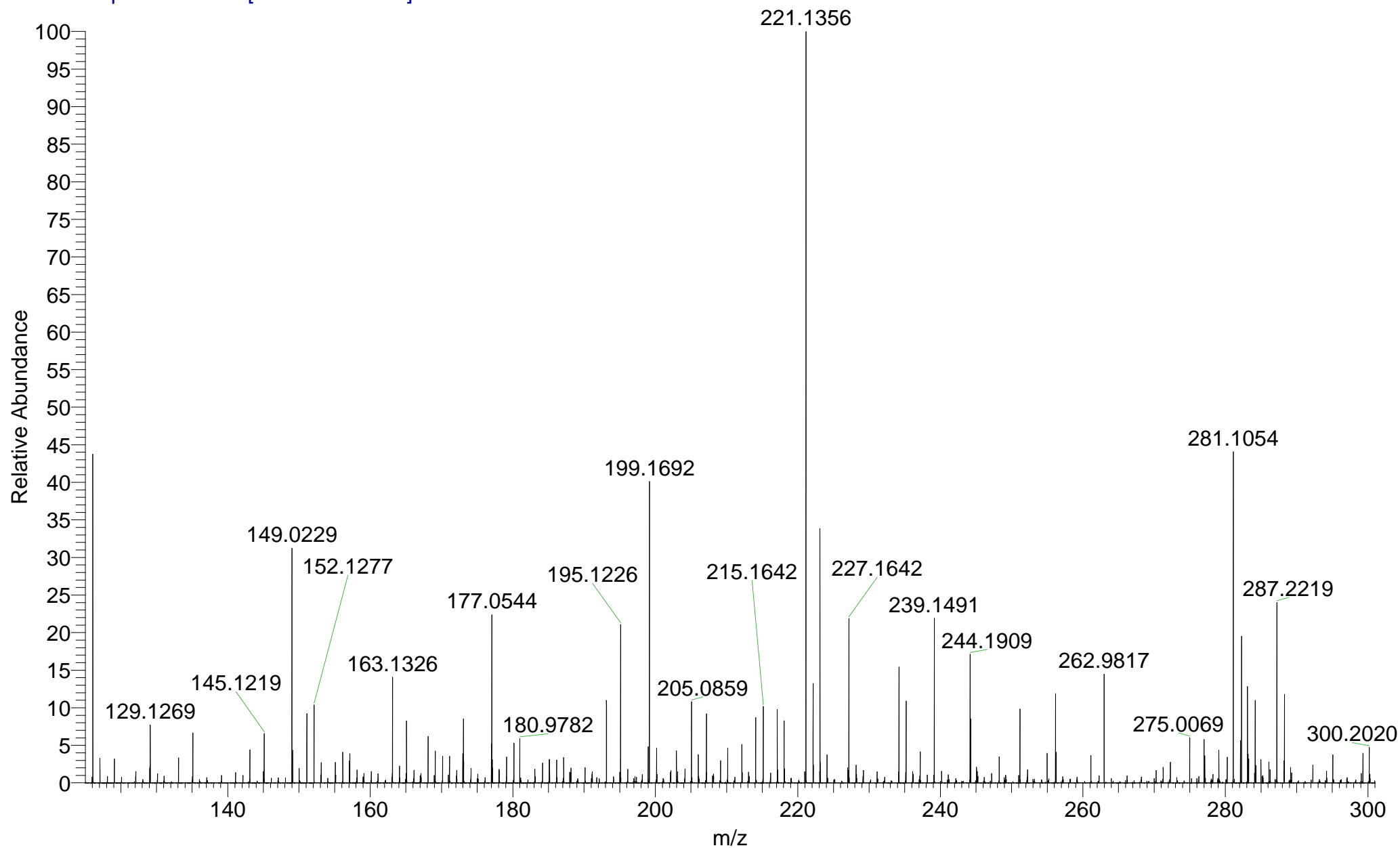


BATJAM_7KYHM_103 #22-28 RT: 0.75-1.03 AV: 6 SM: 7G NL: 9.57E5

T: FTMS + p NSI Full ms [120.00-1935.00]

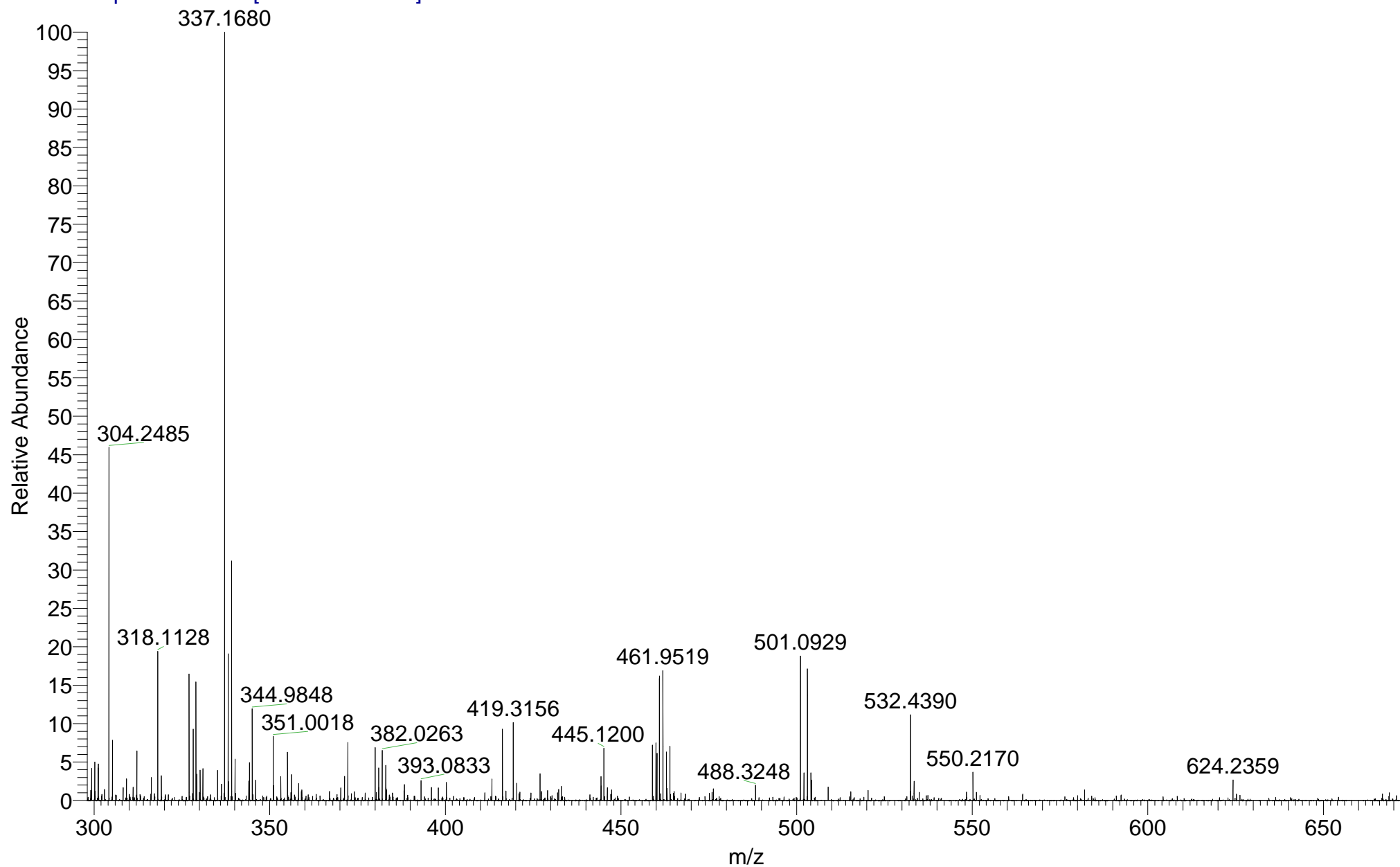


BATJAM_7KYHM_103 #22-28 RT: 0.75-1.03 AV: 6 SM: 7G NL: 9.57E5
T: FTMS + p NSI Full ms [120.00-1935.00]

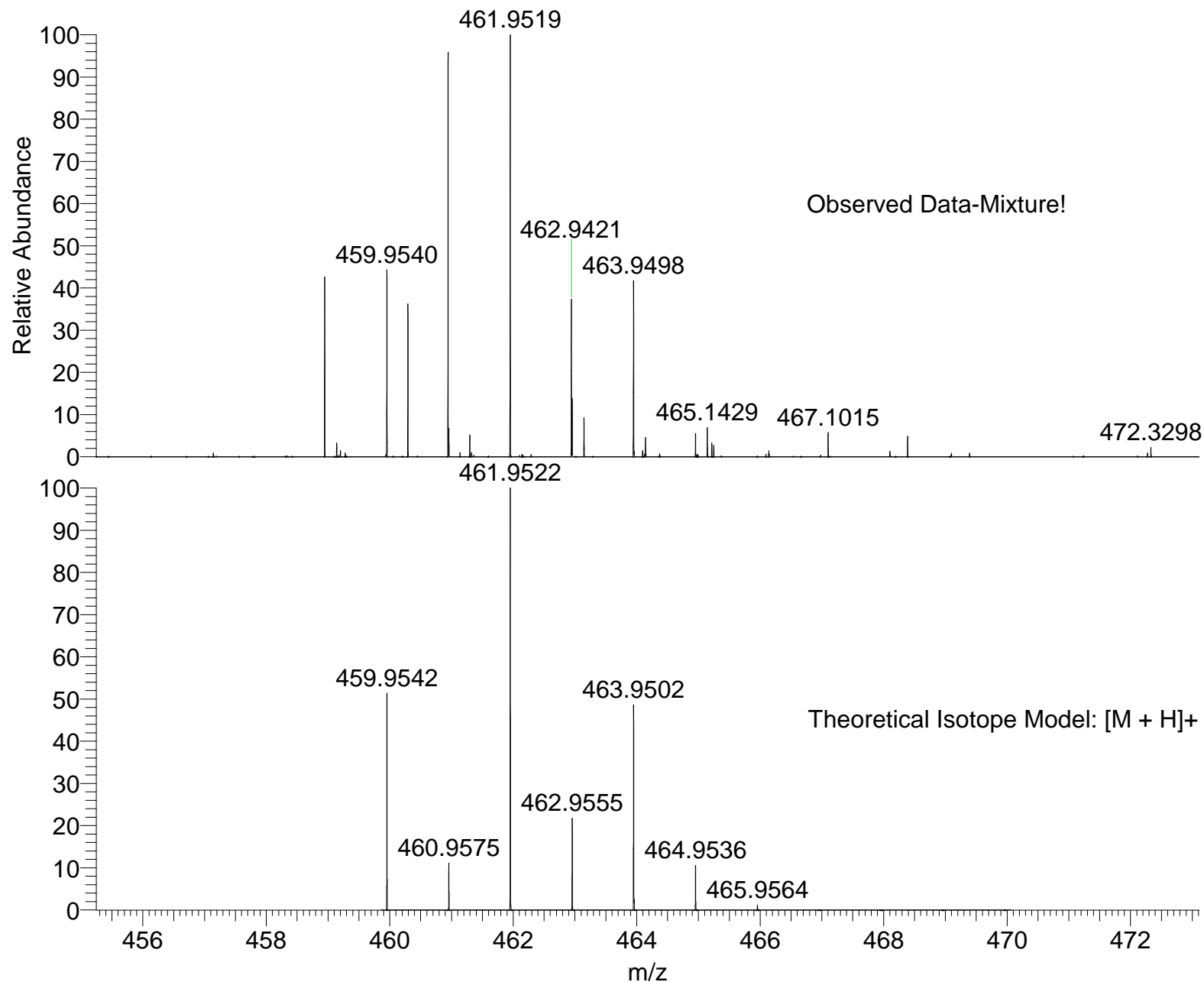


BATJAM_7KYHM_103 #22-28 RT: 0.75-1.03 AV: 6 SM: 7G NL: 9.03E5

T: FTMS + p NSI Full ms [120.00-1935.00]

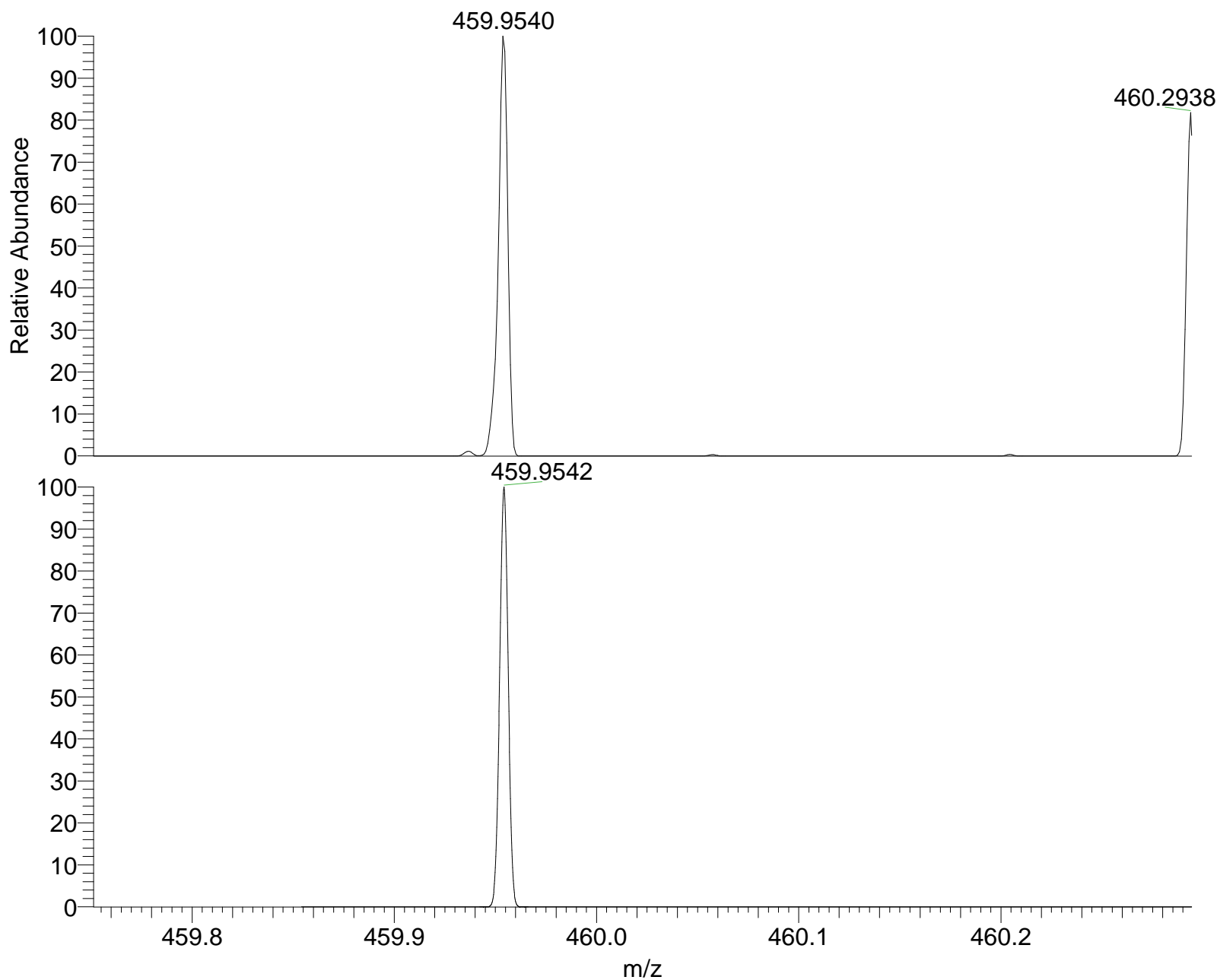


SM: 7G



NL:
1.52E5
BATJAM_7KYHM_103#22-28
RT: 0.75-1.03 AV: 6 T: FTMS
+ p NSI Full ms
[120.00-1935.00]

NL:
9.36E3
C₂₀H₁₅Br₂NO₂H:
C₂₀H₁₆Br₂N₁O₂
p (gss, s /p:40) Chrg 1
R: 100000 Res .Pwr . @FWHM



NL:
6.75E4
BATJAM_7KYHM_103#22-28
RT: 0.75-1.03 AV: 6 T: FTMS
+ p NSI Full ms
[120.00-1935.00]

NL:
4.81E3
C₂₀H₁₅Br₂NO₂H:
C₂₀H₁₆Br₂N₁O₂
p (gss, s /p:40) Chrg 1
R: 100000 Res .Pwr . @FWHM

Isotope: Min. .. Max.
 14 N 0....10
 16 O 0....15
 12 C 0....50
 1 H 0....50
 23 Na 0....0
 79 Br 0....4
 Tolerance Window: +- 5.00 ppm
 Db/Ring Equiv: -3.. 100
 Fits: 300

N-Rule: Do not use
 Charge: 1

Mass	Theoretical Mass	Delta [ppm]	RDB	Composition
459.9540	459.9539	0.1	-2.0	C ₆ H ₂₃ O ₁ N ₈ Br ₃
	459.9542	-0.4	2.5	C ₄ H ₁₁ O ₁₄ N ₇ Br ₁
	459.9542	-0.5	12.5	C ₂₀ H ₁₆ O ₂ N ₁ Br ₂
	459.9537	0.7	15.0	C ₁₈ H ₉ O ₈ N ₂ Br ₁
	459.9537	0.7	20.5	C ₁₇ H ₃ O ₃ N ₉ Br ₁
	459.9545	-1.0	17.0	C ₁₈ H ₄ O ₁₅
	459.9534	1.3	0.5	C ₄ H ₁₆ O ₇ N ₉ Br ₂
	459.9547	-1.6	0.0	C ₆ H ₁₈ O ₈ N ₆ Br ₂
	459.9531	1.9	17.5	C ₁₆ H ₂ O ₁₄ N ₃
	459.9550	-2.2	20.0	C ₁₉ H ₅ O ₄ N ₆ Br ₁
	459.9529	2.4	13.0	C ₁₈ H ₁₄ O ₁ N ₄ Br ₂
	459.9528	2.5	3.0	C ₂ H ₉ O ₁₃ N ₁₀ Br ₁
	459.9553	-2.8	-2.5	C ₈ H ₂₅ O ₂ N ₅ Br ₃
	459.9555	-3.3	2.0	C ₆ H ₁₃ O ₁₅ N ₄ Br ₁
	459.9523	3.6	15.5	C ₁₆ H ₇ O ₇ N ₅ Br ₁
	459.9558	-3.9	22.0	C ₁₉ O ₁₁ N ₄
	459.9561	-4.5	5.0	C ₇ H ₁₄ O ₄ N ₁₀ Br ₂
	459.9561	-4.5	-0.5	C ₈ H ₂₀ O ₉ N ₃ Br ₂
	459.9518	4.7	28.0	C ₃₀ H ₅ O ₁ Br ₁
	459.9518	4.8	18.0	C ₁₄ O ₁₃ N ₆